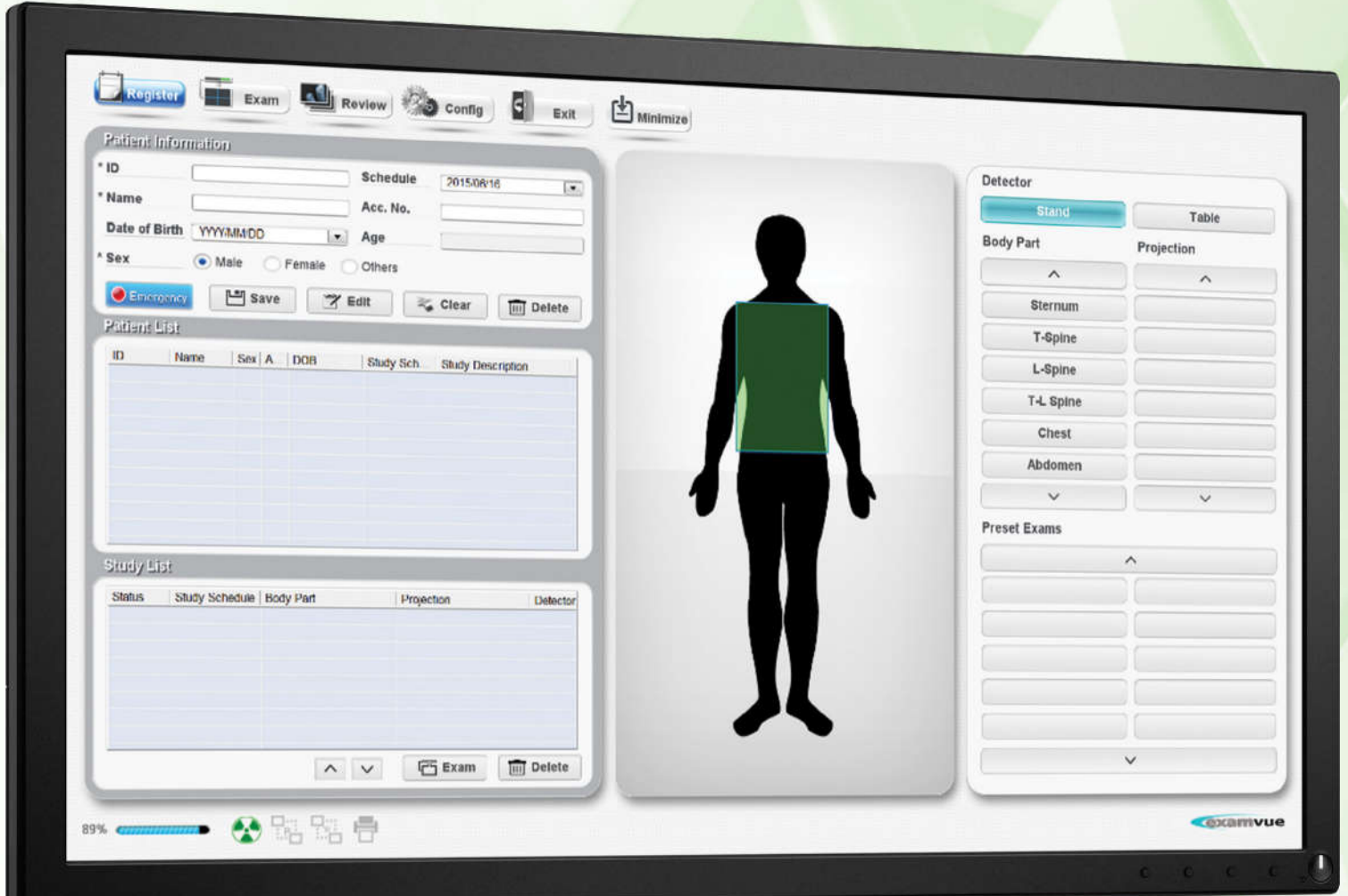




COST EFFECTIVE DIGITAL RADIOGRAPHY

LOW-DOSE CESIUM

AED – AUTOMATIC EXPOSURE DETECTION



CareRay DR
"Powered By" JPI ExamVue



ExamVue DR Acquisition Console Software

- **Patient Registration:** Manually or (DMWL)

DICOM Modality

Worklist. DICOM Modality Worklist is a standard feature and is available for use provided that the HIS/RIS accommodates Modality Worklist.

- **Processing Parameter Settings:** Pediatric,

Small, Medium,

Large Adult, Edge Enhancement, Histogram, Contrast, Latitude

- **Image Acquisition & Review QC:**

flip (horizontal/vertical), rotate (clockwise/counter-clockwise), zoom, pan, window/level, magnifying glass, crop, annotations line measurement, angle measurement, free text, arrow, L&R Markers, Cobb's Angle Measurement, Norberg Angle Measurement

- **Allows for secondary/dual monitor display**

- **Emergency Mode:**

Allows exam to be conducted while no patient data available

- **Image Preview**

- **DICOM Send to PACS, Auto-PACS Send**

- **DICOM Print to DICOM Printer**

- **DICOM Storage Commitment**

- **Hard disk capacity notification bar**

- **Export images** formatted as .jpg, .png, .bmp, and DICOM (with or without Viewer) to CD or other media

- **Export/Back-up to DVD/Removable Drive**

- **Procedure Code Matching**

– Matches body part and projection items with RIS/HIS code

- **Database:** Shows list of stored images after acquisition

- **Compare two images side-by-side**

- **Delete Image**

- **Repeat- Reject function with operator statistics**

- **Grid Line Removal**

- **Stitching Software**

- **AED Mode – Automatic Exposure Detection:** The detector detects actual amount of x-rays without any connection to the X-ray generator, and then performs image acquiring according to image acquisition time and transmits the image data – No signal used (no need to connect to generator interface cable)

- **Exposure Index**



CareRay DR "Powered By" JPI ExamVue

ExamVue DR is a software for the acquisition, processing, storage and viewing of digital x-ray images.

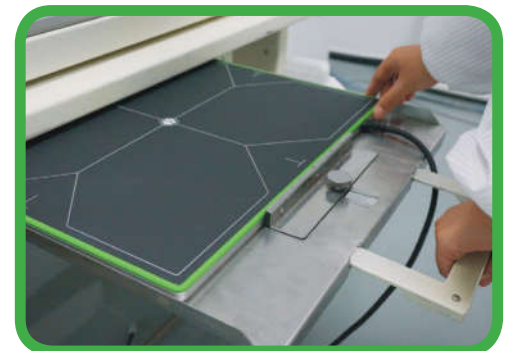
ExamVue DR is indicated for use in general radiology, specialist radiology including podiatry, orthopedic, and other specialties, and in mobile x-ray applications.

ExamVue DR is not indicated for use in mammography.

ExamVue is a very intuitive interface for the user. Very easy to learn!

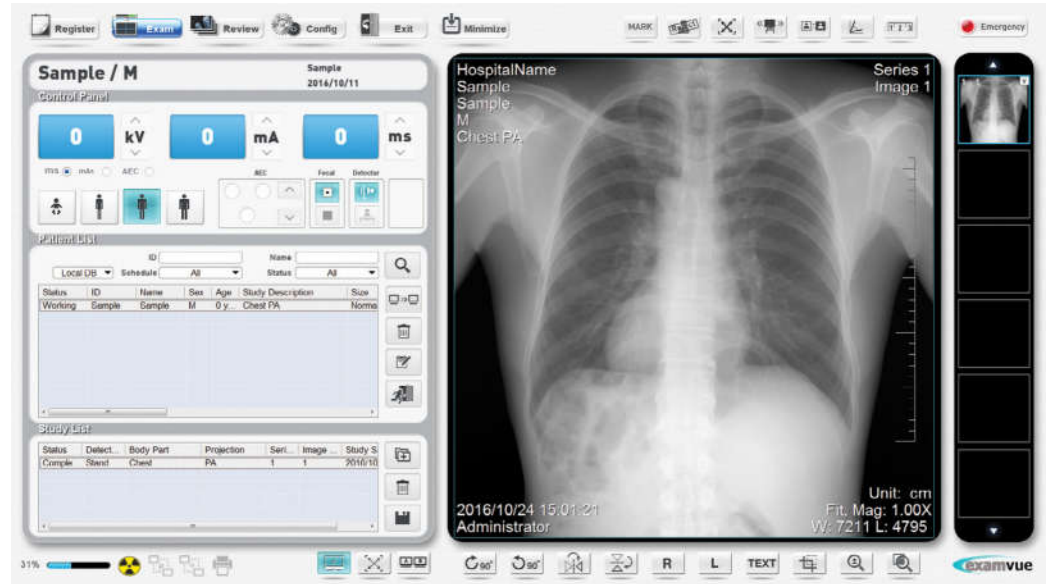
ExamVue includes a large pallet of software functions that are offered for an additional fee by others or are not available from them at all! (ie: DICOM Modality Worklist, DICOM Print, Reject, CD-DVD Burn, Image Stitching, Procedure Code Mapping, etc..)

ExamVue provides added value for our customers in regards to both functionality and price!





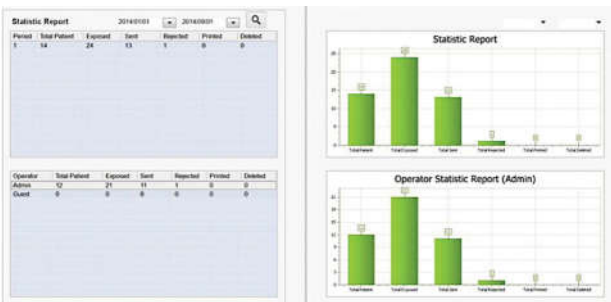
EXAM MODE – MAIN IMAGE PREVIEW*



The ExamVueDR has been integrated with the control and output functions of the following x-ray generators:

- The CPI CMD200DR line of x-ray generators
- The Poskom PSK line of x-ray generators
- The JPI Monoblock generator

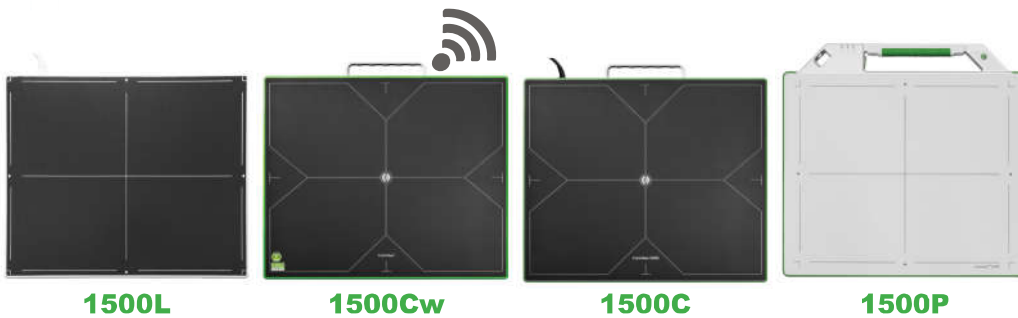
COST EFFECTIVE DIGITAL RADIOGRAPHY



Report Utility Tool

The Report Utility Tool shows statistic information about images that were taken in the past. It displays the Total number of patients, exposed images, sent images, rejected images, printed images, and deleted images. You can also filter information by date or operator.

CAREVIEW SERIES OF DIGITAL FLAT PANEL DETECTORS



CareView® series X-ray flat panel detectors incorporate the proven technology of amorphous silicon. The amorphous silicon photodiode array and TFT underneath convert invisible X-ray photons into visible photons, and then into electric charges.

The electron signals are measured and amplified in the data line, and then converted to digital signals by the Analog/Digital converter. Finally, the digital signals are transmitted to a PC for processing to form an image. High DQE, high spatial resolution, extraordinary dynamic range and ultra-low noise are hallmarks of our CareView® series. Each Careview detector is submitted for FDA, CE and CFDA approval.

We developed in house technology to grow and directly deposit our own Cesium Iodide Crystals on the glass substrate. Most companies must purchase Cesium Iodide Crystals and glue them to the glass substrate which degrades image quality. We provide our customers the benefits of lower patient exposure dose and higher image quality that Cesium Iodide technology provides over Gadolinium technology. Our ability to grow our own Cesium and not have to source from others, allows us to provide our customers with very high quality Images at a very affordable cost!

Benefits of CsI Direct-Deposit Technology

- **LEAST** amount of isotropic photon lateral scattering which means the best resolution (MTF)
- **LOWEST** photon coupling loss which means best quantum efficiency (QE) and detector quantum efficiency (DQE)
- **NO GLUE** which means most reliable long-term performance with superior long-term stability and ambient compatibility
- **A ROBUST**, long lasting detector



CareView® 1500Cw Specifications

Sensor		Environmental	
Scintillator	Direct Deposit Csl:Tl	Operating	
Active Area	433.7 x 354.8mm	Temperature Range	5°C -35°C
Pixel Array	2816 x 2304	Humidity Range (Non-condensing)	30%-75%RH
Pixel Pitch	154 µm		
Image Quality		Storage	
Limiting Resolution	3.25 lp/mm	Temperature Range	-20°C - 55°C
MTF	70%... .. (@ 1 lp/mm)	Humidity Range (Non-condensing)	10% - 90%RH
	40% (@ 2 lp/mm)		
	22% (@ 3 lp/mm)		
DQE		Mechanical	
DQE	(RQA5,27µGy)	Dimension	460 x 384x 15 mm
	~ 65% (@ 0 lp/mm)	Weight	3.7 kg
	~ 20%... .. (@ 3lp/mm)	Housing Material	Carbon Fiber (Front) High Strength Aluminum Alloy(Back)
Sensitivity	~ 0.62 ct/nGy		
Response Non-linearity	<± 0.5 %	Power	
Maximum Linear Dose	>95 µGy	Maximum Power (standby/ operating)	< 8W / 20W
Dark Noise	~ 8 nGy	Power Supply	100-250V AC
Dynamic Range	~ 82 dB	Frequency	50 / 60 Hz
A/D Conversion	16 bits	Battery	3260 mAh, 14.8V
Communication		Regulatory	
Communication interface	Gigabit Ethernet	FDA	K153058
	2.4G/5GHz, 300 Mbps	CE	HD601077350001
Image Acquisition Time	2-3 sec (wired)	Health Canada	96952
	4-5 sec (wireless)	UL	E464810
Exposure control	F ² AED		
	Manual Sync		

Host PC Workstation - (Specifications subject to change without notice)

- Windows 7 Professional 64bit
- Intel Pentium Dual Core 3.7Ghz 3MB w/HD Graphics Processor
- 8GB 1600MHz DDR3 memory
- 1TB Hard Drive
- Image Storage Capacity = 100,000 Images
- DVD writer

Monitor Features:

- 21" Display
- Full HD Resolution 1920 x 1080 pixels, 2MP
- Keyboard and Mouse

Panel Three Year Warranty Coverage:

Covers against mechanical failure and malfunction of the products caused by a deficient design, factory defect or faulty workmanship. Warranty shall be void if: Damages are caused by owner abuse, malicious destruction or accidental drop.

JPI Healthcare Solutions Inc.
52 Newtown Plaza, Plainview, N.Y, 11803, USA

www.jpihealthcare.com



Toll Free: 1-888-574-2001 | Phone: 1-516-513-1330 | Fax: 1-516-513-1331 | Email: sales@jpihealthcare.com