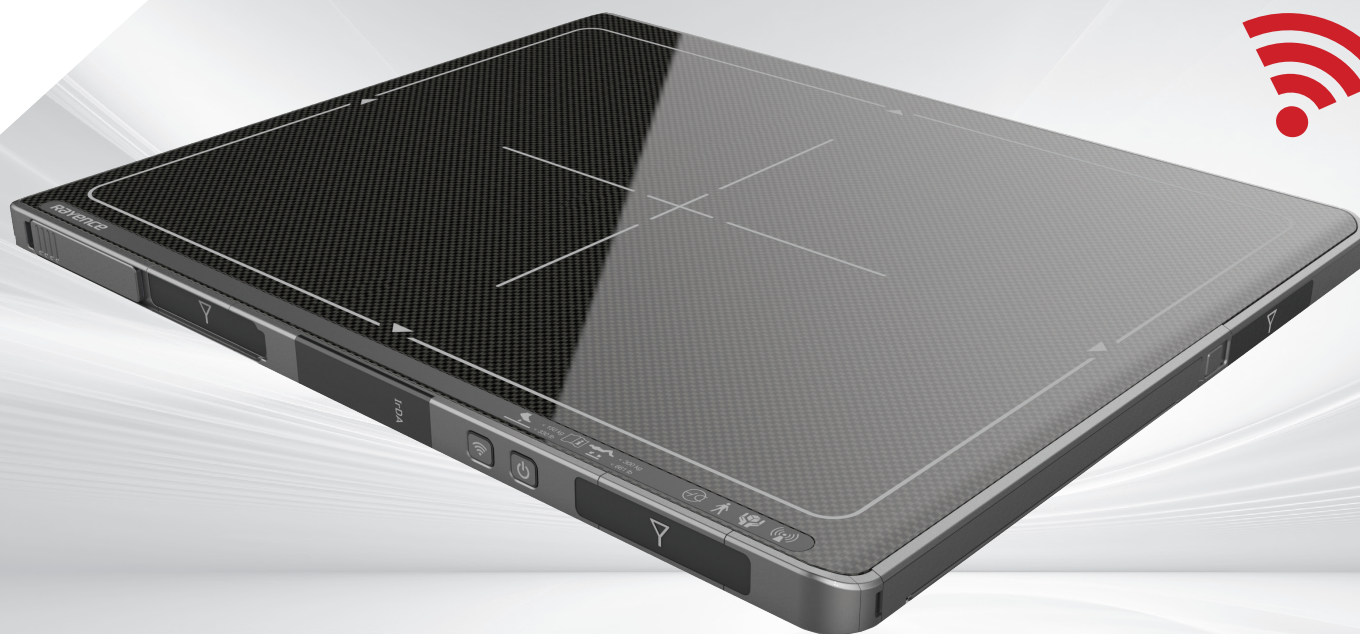




10x12 Wireless Flat Panel Detector

# 1012WCC/WGC



The new, ergonomically designed Rayence C-Series Cesium Iodide and Gadolinium Oxysulfide wireless detectors are designed to offer new levels of handling, functionality and exceptional diagnostic image quality in the X-ray room and beyond.

## FEATURES

- ▲ Tapered, Recessed Edges
- ▲ Thin and Lightweight
- ▲ IP66 Water Resistant
- ▲ Image Storage: 200 Images
- ▲ Room Sharing Functionality
- ▲ Auto Triggering Technology



### Superb Image Quality

1012WCC/WGC's high Detector Quantum Efficiency (DQE) achieves superb image quality with low patient dose.



### Lightweight & Fast

1012WCC/WGC weighs only 3.7lb. Image preview occurs in less than 2 seconds.



### High Visibility OLED

Illuminated OLED window brightly indicates flat panel detector status to the user.



### Ergonomic Design

Curved edges and a non-slip surface makes lifting and handling easier for all tabletop extremity exams as well as for pediatric and neonate imaging.



### Durability

Supporting up to 660 lb., the 1012WCC / WGC is manufactured with a seamless magnesium, unibody construction and is combined with a shock, vibration, and scratch resistant carbon fiber composition.



### Water Resistant (IPX6)

1012WCC/WGC is water resistant to most typical water spills in a hospital as well as in outdoor applications.

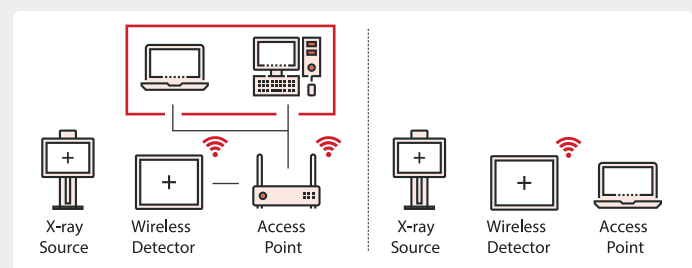
**“ Providing patient throughput in your hospital and beyond ”**



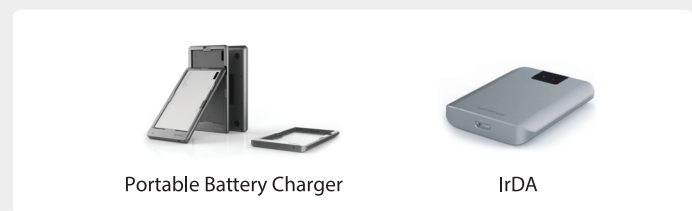
### 1012WCC/WGC Specifications

ScintillatorType	1012WCC : CsI:Tl	-
	1012WGC : Gd <sub>2</sub> O <sub>2</sub> S:Tb	
Dimension	12.9 x 10.6 x 0.6	in
Weight	3.70 (incl. battery)	lb
Total Pixel Area	11.5 x 8.9	in
Pixel Pitch	127	µm
Effective Pixel Matrix	2264 X 1752	Pixels
A/D Conversion	14 / 16	bits
Preview time	≤2 (2x2 binning)	sec
Energy range	40 ~ 150	kVp
Pressure	Distributed : 661 Point : 330	lb
Limiting Resolution	Min. 2.5 / Max. 3.93	lp / mm
Battery OperatingTime	Typ. 4	Hours

### Detector Room Sharing



### Options



## Contact us

Rayence Inc.  
 2200 Fletcher Ave. St. 705B Fort Lee, NJ 07024  
 Office: (1)201-585-0290 Fax: (1)201-585-0293  
 Email: information@rayenceusa.com  
 www.rayenceusa.com

