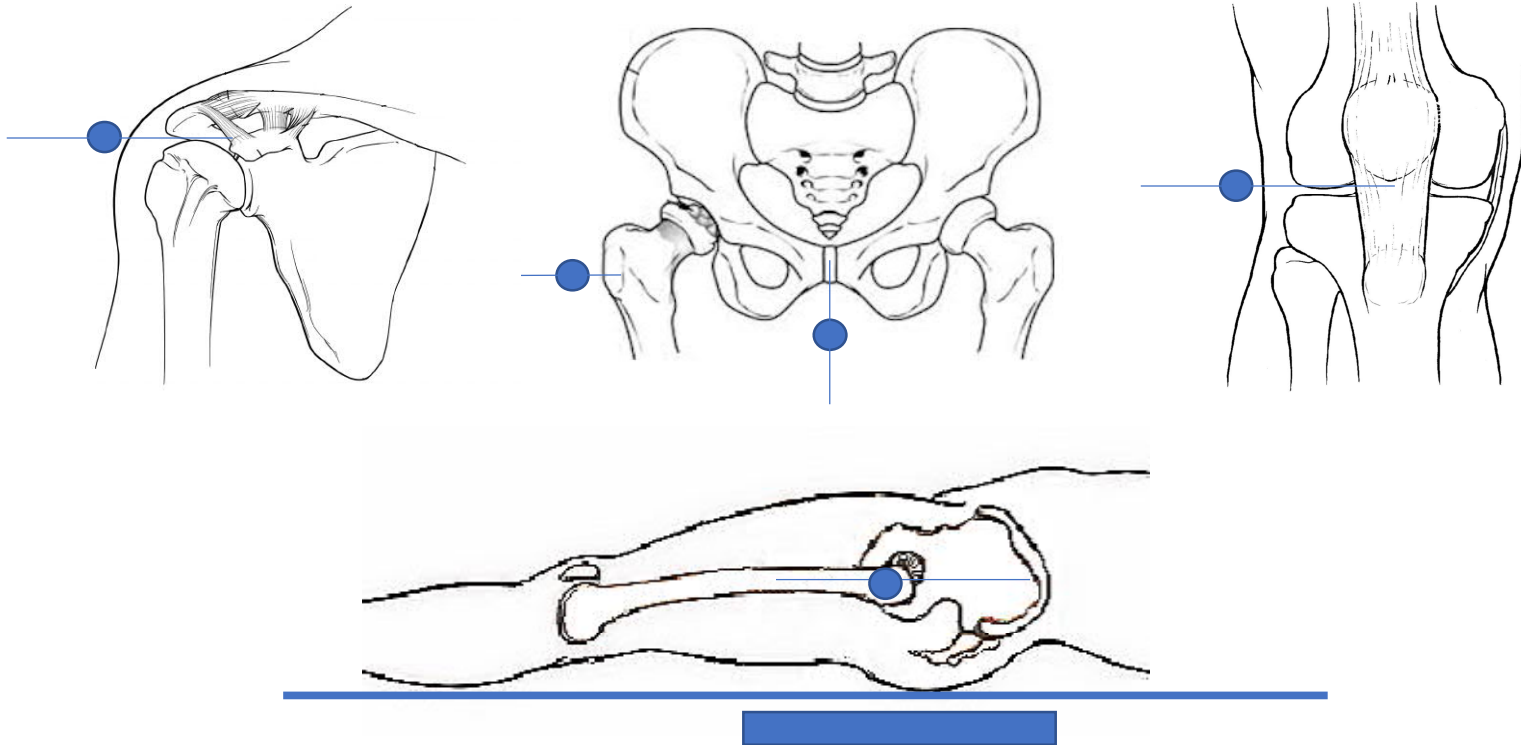


OrthoMark[®] Positioning Guide



OrthoMark® Positioning Guide



Simply position the OrthoMark ball (represented by the blue disc) near the bone of interest in the manner shown. Ensure that the OrthoMark ball is within the image field and is the same distance from the digital detector (the same plane) as the bone. If possible, palpate the anatomy to help precisely align OrthoMark. Use is not limited to positions shown above. These are shown only as an indication of use.

OrthoMark®

Positioning OM-1001



Acrylic Base Model OM-1001 is designed for use...well...anywhere you can place it. We've seen it draped over the top edge of an upright bucky and attached with Velcro to the upright stand itself. Your imagination is the limit. That being said, the original intent was to stand freely on the x-ray table, or to slide beneath the patients leg to hold it in place.

Position the sphere normally after positioning the base.



OrthoMark®

Positioning OM-1002



Magnetic Base Model OM-1002 is designed for use on ferrous surfaces.

Simply attach it to your surface, position the OrthoMark sphere, and you're good to go.



OrthoMark®

Positioning OM-1003



Suction Cup Model OM-1003 is designed for use on smooth surfaces. This unit is not intended for use on dimpled or other surfaces.

When using, please be sure to place the suction cup firmly on the surface, then activate the lever handle by squeezing and “closing” the handles together. This will provide a firm hold and allow the OrthoMark ball to be positioned easily.

When finished, it is a good idea to lightly clean the surface with water and place on a counter or in a cabinet to avoid dust gathering. It is also best not to leave the suction cup attached to a wall or your equipment. The suction will eventually dissipate and the unit will fall.



OrthoMark®

Positioning OM-1005



Clamp Base Model OM-1005 is designed for use on any clampable surface without sharp edges, flat or round, up to 2" thick. The band may break if overstretched repeatedly. If desired, the orange band may be pulled out to allow a slightly wider grip.

When using, squeeze the handles, let it grip your surface, and release. When attaching to a round surface, try to place the centerline of the clamp pads directly over the clamped surface.

Position the sphere normally afterward.



OrthoMark®

Positioning OM-1006



Shorty 2.5" Quick Suction Cup Model OM-1006 is designed for use on smooth surfaces, by fast techs.

When using, prepare OrthoMark for it's destination by getting it as close to the desired height as possible. Then holding the base in one hand, the end of the arm in the other, and in one deft movement, plunge the suction cup downward and simultaneously finely position the sphere. This should offer about two minutes worth of holding power.

When finished, it is a good idea to lightly clean the surface with water and place on a counter or in a cabinet to avoid dust gathering. It is also best not to leave the suction cup attached to a wall or your equipment. The suction will eventually dissipate and the unit will fall.



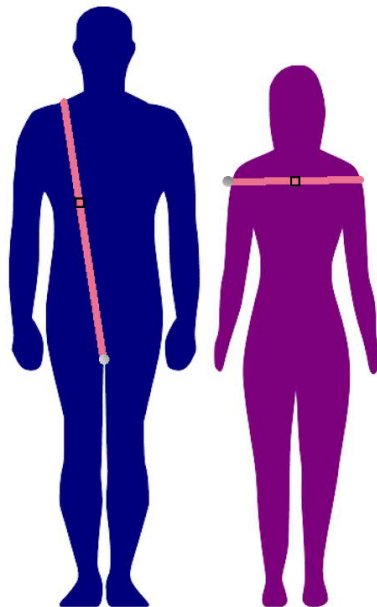
OrthoMark®

Positioning OM-1008



Strap Model OM-1008 is designed for use in any way your imagination can make it work.

When using, slip the strap around your patients body, buckle toward the front, release the latch and snug it up, then secure the latch. It does not need to be tight.



OrthoMark®

Positioning OM-1009



Lever Action 2.75" Super Suction Model OM-1009 is designed for use on any smooth surface and surfaces that are slightly dimpled or not completely smooth. This unit will not function well on a surface that appears "sandy" or rough.

When using, simply place against surface and squeeze lever until it clicks. This will provide a firm hold and allow the OrthoMark ball to be positioned easily. Remove by pressing the lock button on the side.

When finished, it is a good idea to lightly clean the surface with water and place on a counter or in a cabinet to avoid dust gathering. It is also best not to leave the suction cup attached to a wall or your equipment. The suction will eventually dissipate and the unit will fall.



OrthoMark®

Positioning OM-1010



Super 2.9" Plunger Suction Cup Model OM-1010 is designed for use on any smooth surface and surfaces that are slightly dimpled or not completely smooth. This unit will not function well on a surface that appears "sandy" or rough.

When using, please be sure to activate the plunger until the red line disappears. This will provide a firm hold and allow the OrthoMark ball to be positioned easily. Remove by gripping the two tabs and squeezing.

When finished, it is a good idea to lightly clean the surface with water and place on a counter or in a cabinet to avoid dust gathering. It is also best not to leave the suction cup attached to a wall or your equipment. The suction will eventually dissipate and the unit will fall.

